

BACK COVER

COVER



Breakthrough Innovations to Lead the LED Lighting Market

ICBright is a market leader in innovations. Its proprietary technologies and key product lines with full intellectual property rights, IC LED, is changing the landscape of LED lighting industry. IC LED products greatly reduce the costs of most LED lamps while maintaining excellent quality as well as making downstream production of LED lamps extremely simple. Because IC LED's circuitry is printed on a ceramic base directly, no traditional PCB or any etching processes are used, the production process of LED lamps based on IC LED is green, there are no pollutions to the environment during production in contrast to that of current LED lamps.

Competitive Advantages of Proprietary IC Manufacturing Process and System in Packaging (SiP) Technologies

ICBright has the technical capabilities to develop proprietary IC manufacturing processes and has the long-term cooperation relationships with some world's most advanced IC Fabs, which brings unparalleled advantages to develop IC products with best functions and performances as well lower costs, also difficult to be imitated and replicated easily. ICBright has developed a LED lighting driver IC chip of the world's lowest cost based on proprietary IC manufacturing processes in year 2013, and has further developed systematic packaging of LEDs and all driver components packaged at wafer level, the most advanced technologies of its kind.

Industry Resources and Alliances

ICBright is very capable of integrating industrial resources, has built strategic relations with elite research institutes and universities, such as Institute of Microelectronics of Chinese Academy of Science Shanghai Institute of Microsystem and Information Technology of The School of Software and Microelectronics of Peking University, etc., to continuously develop new technologies and new products.

Management Team with World Class Calibers

ICBright has attracted top talents in IC design, process, application, packaging and other related technological fields, most of tech team members have many years of working experiences in top multinational IC chip companies in USA and Europe. Its operational team are also very experienced and skillful in every aspects of corporate management. ICBright will continue its innovation to develop more products and its technological capabilities to lead the market.

How To Identify Good Quality DOB?



IC



LED&Components



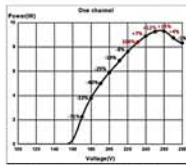
insulated AL base



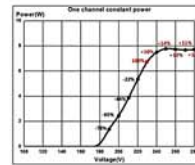
Solution

Right IC

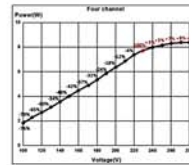
IC is the brain of DOB.
ICBright has the capability to design IC.



One channel IC (IB3316)



One channel Constant Power IC (IB3317)



Four Channel IC (IB3318)

Conclusion: In fluctuating input power grid region, we suggest customers to choose 4 channel IC and 1 channel constant power IC.

Quality LEDs and Components



- 1) LED price varies widely as the size, frame, Lumen and brand of chip differ. Cheap and low quality LEDs price is only 20% of the quality ones.
- 2) All components should be from original factories, not from "copied" one.

Quality Insulated AL Base

The standard requirement of insulated AL based plates for bulbs are:

- 1) thickness: 1.0mm and above;
- 2) Copper Film thickness : 1oz/35 μ m and above;
- 3) Thermal conductivity: 0.8 above.



Copper Film 35 μ m



Copper Film 15 μ m

Conclusion: Low quality AL will start to have foam and become brittle in 4-6 months, and thus die soon.

Solution with Necessary Protections

- 1) over-temperature protection,
- 2) Surge protection 600v-1.5kv-2.5kv-4kv etc.,
- 3) Strongly recommend to use over current fuse

Bulb DOB



Crystal



2 year warranty

Jade



2 year warranty

Diamond



For Projects
5 year warranty

Features

-
- 1. One channel constant or Multiple Channel IC, AC160-265, stand 130v-300v, PF0.9
- 2. PCB thickness 1.0, High Lumen Leds
- 3. Quick assembly, Easy Replacement.

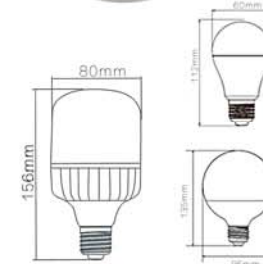
Specifications

Name	Model	Lamp Power(W)	Input Voltage	SIZE	PCB	IC	Color Temp	CRI	Surge Protection
Crystal	B-32-03P-A1	3w	AC200-260,stand 130v-300v,50/60HZ	D32	1.0	1-channel Constant	2700/6500	70/80	1kv
	B-32-05P-A1	5w		D32	1.0	1-channel Constant	2700/6500	70/80	1kv
	B-40-07P-A1	7w		D40	1.0	1-channel Constant	2700/6500	70/80	1.5kv
	B-40-09P-A1	9w		D40	1.0	1-channel Constant	2700/6500	70/80	1.5kv
	B-44-12P-A1	12w		D44	1.0	1-channel Constant	2700/6500	70/80	1.5kv
	B-50-15P-A1	15w		D50	1.0	1-channel Constant	2700/6500	70/80	1.5kv

Name	Model	Lamp Power(W)	Input Voltage	SIZE	PCB	IC	Color Temp	CRI	Surge Protection
Jade	B-40-07P-A4	7w	AC150-260,stand 130v-300v,50/60HZ	D40	1	4-channel	2700/6500	70/80	1.5kv
	B-40-09P-A4	9w		D40	1	4-channel	2700/6500	70/80	1.5kv
	B-44-12P-A4	12w		D44	1	4-channel	2700/6500	70/80	1.5kv
	B-50-15P-A4	15w		D50	1	4-channel	2700/6500	70/80	1.5kv
	B-50-18P-A1	18w		D50	1	4-channel	2700/6500	70/80	1.5kv

DOB Bulb

- AC direct, easy assemble
- Cost effective
- 2 years warranty



Model	Lamp Power(W)	DOB	Lumen(LM)	Housing	SIZE	Base	Notes
B50G04-3C	3	Crystal /Jade	240	Plastic, AL plate	f 50*84	E27/B22	Fuse,MOV Optional
B60G04-5C	5	Crystal /Jade	400	Plastic+AL	f 60*110	E27/B22	
B65G04-7C	7	Crystal /Jade	560	Plastic+AL	f 65*115	E27/B22	
B65G04-9C	9	Crystal /Jade	820	Plastic+AL	f 65*115	E27/B22	
B70G04-12C	12	Crystal /Jade	960	Plastic+AL	f 70*122	E27/B22	

Downlight DOB&AC Downlight



Beauty



Features

1. Multiple Channel Constant Current IC, AC160-265, stand 130v-300v, PF 0.9
2. PCB thickness 1.0, High Lumen Leds
3. Quick assembly, Easy Replacement.

Specifications

Name	Model	Lamp Power(W)	Input Voltage	Size	PCB Thickness	IC	Lumen(lm)	Color Temp	CRI	Surge Protection
Beauty	D-45-05P-A4	3/5	AC150-260,stand 130v-300v,50/60HZ	D45	1	4-channel	380	2700/6500	70/80	1.5KV
	D-52-07P-A4	6/7		D52	1	4-channel	570	2700/6500	70/80	1.5KV
	D-80-09P-A4	10/12		D80	1	4-channel	950	2700/6500	70/80	1.5KV
	D-103-15P-A4	15		D103	1	4-channel	1250	2700/6500	70/80	1.5KV
	D-103-20P-A4	18/20		D103	1	4-channel	1800	2700/6500	70/80	1.5KV



Downlight	Lamp Power(W)	DOB	Lumen(L/M)	housing	Hole Size(mm)	Warranty	Notes
D2.5(G)07-3C-A4	3/5	Beauty	304	Aluminum RD/SQ	65	2 Years	Fuse, Mov Optional
D3(G)06-6C-A4	6/7	Beauty	456	Aluminum RD/SQ	80		
D4(G)06-10C-A4	10/12	Beauty	760	Aluminum RD/SQ	110		
D5(G)06-15C-A4	15	Beauty	1000	Aluminum RD/SQ	135		
D6(G)06-18C-A4	18/20	Beauty	1440	Aluminum RD/SQ	145		

DOB Floodlight



Rock

Cool

Campo



Features

1. Multiple Channel Constant Current IC, AC160-265v, stand 130v-300v, high PF
2. Built-in Surge Protection 2.5kv/4KV
3. PCB thickness 1.2/1.5, big size and bright led 65-70LM/pc
4. Reliable, longer Life Span 2 years/3 years warranty for projects
5. Quick assembly, Easy Replacement.

Specifications

Name	Model	Lamp Power(W)	Input Voltage	SIZE	PCB Thickness	IC	Lumen(lm)	Color Temp	CRI	Surge Protection	Warranty
Rock	F-110*68-20P-A4	20	AC150-260,stand 130v-300v,50/60HZ	110*68	1.5	4-channel	1900	2700/6500	70/80	4KV	3 years
	F-120*85-30P-A4	30		120*85	1.5	4-channel	2850	2700/6500	70/80	4KV	
	F-158*96-50P-A4	50		158*96	1.5	4-channel	4750	2700/6500	70/80	4KV	
	F-197*180-100P-A4	100		197*180	1.5	4-channel	9500	2700/6500	70/80	4KV	

Name	Model	Lamp Power(W)	Input Voltage	SIZE	PCB Thickness	IC	Lumen(lm)	Color Temp	CRI	Surge Protection	Warranty
Cool	F-110*68-20P-A4	20	AC150-260,stand 130v-300v,50/60HZ	110*68	1.2	4-channel	1900	2700/6500	70/80	2.5kv	2 years
	F-120*85-30P-A4	30		120*85	1.2	4-channel	2850	2700/6500	70/80	2.5kv	
	F-158*96-50P-A4	50		158*96	1.2	4-channel	4750	2700/6500	70/80	2.5kv	
	F-197*180-100P-A4	100		197*180	1.2	4-channel	9500	2700/6500	70/80	2.5kv	
	F-185*183-150P-A4	150		185*183	1.2	4-channel	14250	2700/6500	70/80	2.5kv	
F-218*267-200P-A5	200	218*267	1.2	4-channel	19000	2700/6500	70/80	2.5kv			

Name	Model	Lamp Power(W)	Input Voltage	SIZE	PCB Thickness	IC	Lumen(lm)	Color Temp	CRI	Surge Protection	Warranty
Campo	IB-F-128*75-30P-A1	30	AC180-260,stand 130v-300v,50/60HZ	128*75	1.2	1-channel Constant	2850	2700/6500	70/80	2.5kv	2 years
	IB-F-185*105-50P-A1	50		185*105	1.2	1-channel Constant	4750	2700/6500	70/80	2.5kv	
	IB-F-224*158-100P-A1	100		224*158	1.2	1-channel Constant	9500	2700/6500	70/80	2.5kv	
	IB-F-287*188-150P-A1	150		287*188	1.2	1-channel Constant	14250	2700/6500	70/80	2.5kv	

FLOOD LIGHT

- Aluminum housing
- Built-in Surge Protector
- Long life for project



Name	Model	Lamp Power(W)	DOB	Lumen	Housing	Warranty
Rock	F(G)03-20B	20	Rock	1600	640g, IP65, Color black, Aluminum Reinforced glass, stainless steel screws	3 Years
	F(G)03-30B	30		2400	1060g, IP65, Color black, Aluminum Reinforced glass, stainless steel screws	3 Years
	F(G)03-50B	50		4000	1500g, IP65, Color black, Aluminum Reinforced glass, stainless steel screws	3 Years
	F(G)03-100B	100		8050	2800g, IP65, Color black, Aluminum Reinforced glass, stainless steel screws	3 Years

Name	Model	Lamp Power(W)	DOB	Lumen	Housing	Warranty
Cool	F(G)06-30B	30	Cool	2400	1060g, IP66, Color black, Aluminum Reinforced glass, stainless steel screws	2 years
	F(G)06-50B	50		4000	1500g, IP66, Color black, Aluminum Reinforced glass, stainless steel screws	2 years
	F(G)06-100B	100		8050	2800g, IP66, Color black, Aluminum Reinforced glass, stainless steel screws	2 years
	F(G)06-150B	150		12100	3400g, IP66, Color black, Aluminum Reinforced glass, stainless steel screws	2 years
	F(G)06-200B	200		16150	4700g, IP66, Color black, Aluminum Reinforced glass, stainless steel screws	2 years

Name	Model	Lamp Power(W)	DOB	Lumen	Housing	Warranty
Campo	F(G)07-30B	30	Campo	2400	570g, IP66, Color black, Aluminum Reinforced glass, stainless steel screws	2 years
	F(G)07-50B	50		4000	1030g, IP66, Color black, Aluminum Reinforced glass, stainless steel screws	2 years
	F(G)07-100B	100		8050	1500g, IP66, Color black, Aluminum Reinforced glass, stainless steel screws	2 years
	F(G)07-150B	150		12100	2100g, IP66, Color black, Aluminum Reinforced glass, stainless steel screws	2 years

High Quality High-bay DOB

- AC DOB
- Price Competitive



PG02



Model	Lamp Power(W)	Input Voltage	Light Source	Color Temp	CR	Surge Protection	PF	Lumen(lm)
F(G)03-50B	50	AC220-240 stand 130v-300v, 4 channel IC	DOB	2700/6500	70/80	2.5kv	0.9	4500
F(G)03-100B	100		DOB	2700/6500	70/80	2.5kv	0.9	9000

HIGH PF Indoor BIS Driver for Panel Light



Features

1. BIS certified, BIS No.R-41058009
2. AC85V-300V, high PF, isolated driver, 2.5kv surge protection options
3. Brand components, 5000Hrs capacitor
4. Reliable, longer Life Span, 2 years warranty.
5. for Panel light and down light

Specifications

Model	Power	Input Voltage	Output Voltage	Output Current	PF	Efficiency	Certificate	Size	Warranty
IB-0508-300HP	5-8w	AC85-265V	DC12-25V	300mA±5%	0.9	5-8W	BIS	68*33*22 mm	2 Years
IB-0812-300HP	8-12w	AC85-265V	DC20-40V	300mA±5%	0.9	8-12W	BIS	88*38*22 mm	
IB-1218-300HP	12-18w	AC85-265V	DC30-60V	300mA±5%	0.9	12-18W	BIS	88*38*22 mm	
IB-1824-300HP	18-24w	AC85-265V	DC50-80V	300mA±5%	0.9	18-24W	BIS	111*42*25 mm	
IB-1824-600HP	18-24w	AC85-265V	DC27-40V	600mA±5%	0.9	18-24W	BIS	111*42*25 mm	



PG01



PG02



PG03



PG04

Model	Lamp Power(W)	Driver	Color Temp	CRI	Lumen	Quantity/ Carton	Warranty Time
PG01-3D	3	IB-0103-300LP	2700/6500	70/80	210	50	2 years
PG01-6D	6	IB-0407-300HP	2700/6500	70/80	420	50	2 years
PG01-9D	9	IB-0812-300HP	2700/6500	70/80	720	50	2 years
PG01-12D	12	IB-1218-300HP	2700/6500	70/80	960	50	2 years
PG01-15D	15	IB-1218-300HP	2700/6500	70/80	1200	30	2 years
PG01-18D	18	IB-1824-300HP	2700/6500	70/80	1440	30	2 years

Model	Lamp Power(W)	Driver	Color Temp	CRI	Lumen	Quantity/ Carton	Warranty Time
PG03-3D	3	IB-0103-300LP	2700/6500	70/80	150	50	2 years
PG03-6D	6	IB-0407-300HP	2700/6500	70/80	300	50	2 years
PG03-12D	12	IB-1218-300HP	2700/6500	70/80	780	50	2 years
PG03-18D	18	IB-1824-300HP	2700/6500	70/80	1440	30	2 years

HIGH PF Indoor BIS Driver for Panel Light



DG02



DG01



SG05



SG02

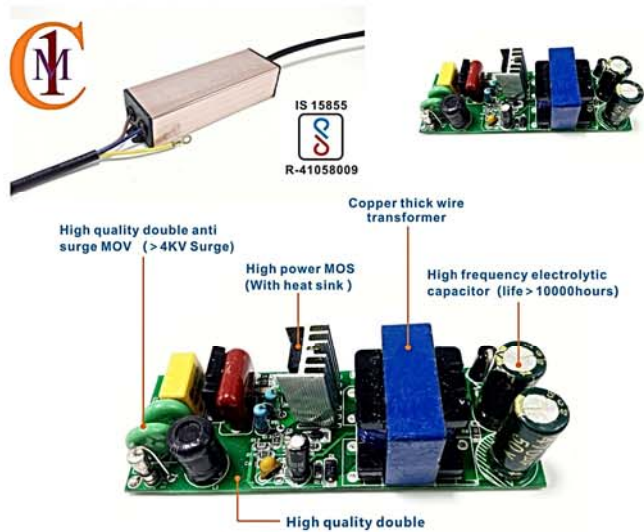
Model	Lamp Power(W)	Driver	Color Temp	CRI	Lumen	Carton Size	Warranty Time
D3(G)02-5B	5	IB-0407-300HP	2700/6500	70/80	350	42*42*25	2 years
D4(G)02-10B	10	IB-0812-300HP	2700/6500	70/80	700	50*38*27	2 years
D5(G)02-15B	15	IB-1218-300HP	2700/6500	70/80	1050	45*45*29	2 years

Model	Lamp Power(W)	Driver	Color Temp	CRI	Lumen	Carton Size	Warranty Time
D3(G)01-5B	5	IB-0407-300HP	2700/6500	70/80	350	42*42*23	2 years
D4(G)01-10B	10	IB-0812-300HP	2700/6500	70/80	700	50*50*33	2 years
D5(G)01-15B	15	IB-1218-300HP	2700/6500	70/80	1050	57*39*33	2 years

Model	Lamp Power(W)	Driver	Color Temp	CRI	Lumen	Carton Size	Warranty Time
S(G)02-20B	20	IB-1824-300LP	2700/6500	70/80	1400	62*62*32	2 years
S(G)02-30B	30	IB-3036-900HA	2700/6500	70/80	2100	60*48*37	2 years
S(G)02-40B	40	IB-4050-1500HA	2700/6500	70/80	2800	60*50*39	2 years

Model	Lamp Power(W)	Driver	Color Temp	CRI	Lumen	Carton Size	Warranty Time
S(G)05-20B	20	IB-1824-300LP	2700/6500	70/80	1400	59*51*28	2 years
S(G)05-35B	35	IB-3036-900HA	2700/6500	70/80	2450	57*46*34	2 years

High Surge Protection Waterproof Outdoor BIS Driver



Features

1. BIS certified, BIS No. R-41058009
2. AC85V-300V, high PF, isolated water-proof driver, 4.5kv surge protection
3. Brand components, 5000Hrs capacitor
4. Reliable, longer Life Span, 2 years warranty, 5 years warranty option
5. for Flood light and street light

Specifications

Model	Power	Input Voltage	Output Voltage	Output Current	PF	Efficiency	Certificate	Size	Warranty
IB-1824-600HA	18-24w	AC85-265V	DC36-43V	600mA ± 5%	0.9	18-24W	BIS	80°30'20	2 Years
IB-3036-900HA	30-36w	AC85-265V	DC30-36V	900mA ± 5%	0.9	30-36W	BIS	95°36'24	
IB-4050-1500HA	40-50w	AC85-265V	DC30-36V	1500mA ± 5%	0.9	40-50W	BIS	105°36'28	

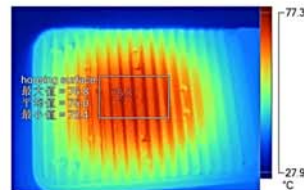
High Bright Quality Street light



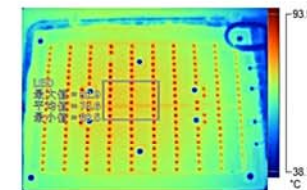
Specifications

Model	Lamp Power(W)	Driver	Light Source	Lumen	Color Temp.	CRI	Housing	Warranty
R(G)01-24B	24	IB-1824-600HA	5730, 0.5w/pc, Episode, 65-70lm/pc	2160	2700/6500	70/80	650g, IP66,Color black,Aluminum,Reinforced glass, stainless steel screws	2 years
R(G)01-36B	36	IB-3036-900HA	5730, 0.5w/pc, Episode, 65-70lm/pc	3240	2700/6500	70/80	950g, IP67,Color black,Aluminum,Reinforced glass, stainless steel screws	2 years
R(G)01-50B	50	IB-4050-1500HA	5730, 0.5w/pc, Episode, 65-70lm/pc	4500	2700/6500	70/80	950 g, IP66,Color black,Aluminum,Reinforced glass, stainless steel screws	2 years
R(G)01-72B	72	IB-3036-900HA	5730, 0.5w/pc, Episode, 65-70lm/pc	5200	2700/6500	70/80	2150g, IP68,Color black,Aluminum,Reinforced glass, stainless steel screws	2 years
R(G)01-100B	100	IB-4050-1500HA	5730, 0.5w/pc, Episode, 65-70lm/pc	9000	2700/6500	70/80	2150g, IP68,Color black,Aluminum,Reinforced glass, stainless steel screws	2 years

Temperature at full load for 100W



Temperature of Housing



Temperature of LED on Plate



Solar Wall Light/ Solar Lawn Light



W(SL)-03-6(3W,6W)



W(SL)04-6(3W,6W)



W(SL)-02-10(3W,5W,8W,10W)



W(SL)01-2(2W,4.5W)



L(SL)01-2

Features

1. High quality and efficiency imported solar cell silicon chip and toughened glass, Super high bright Led chips
2. Multiple control modes, light control, Time control, and PIR
3. Longer Life time. Solar Panels can be used for 15 to 20 years, the battery can be used for 5 to 7 years
4. No need of connecting wires, easy installation
5. Free and Green Energy

Model	Solar panel	Battery	Light source	POWER	Lumens	CT	Charging time	Working hours	Material	Waterproof level	Induction distance	Function
L(SL)01-2	5V 2W Polysilicon	3.7V2200mah Lithium battery	2835 LED 4PCS	2W	High-grade 200LM Low-grade 80-100LM	2700K-6500K	4.5h	6-9h	ABS+PS	IP44	/	Light& Time controlled
W(SL)01-2	5.5V 0.5w Polysilicon	3.7v 1200mah Lithium battery	2835 LED16PCS	2W	300LM	2700K-6500K	8 h	1-12h	ABS + PC	IP65	3-5m	Light& Time controlled
W(SL)02-10	12V 12W Polysilicon	7.4V18000mah Lithium battery	5730 LED 72PCS	10W	High-grade 1000LM Low-grade 100-120LM	3000K-6500K	8-10H	10-12H	ADC12+PC	IP65	6-8M	Light& Time controlled
W(SL)03-6	12V 10W Polysilicon	7.4V14400mah Lithium battery	2835 LED 64PCS	6W	High-grade 600LM Low-grade 100-120LM	3000K-6500K	6-8h	10-12H	ADC12+PC	IP65	6-8M	Light& Time controlled
W(SL)04-6	6V 6W Polysilicon	3.7V4440mah Lithium battery	5730 LED 48PCS	6W	High-grade 600LM Low-grade 100-120LM	3000K-6500K	6-8H	10-12H	ADC12+PC	IP65	6-8M	Light& Time controlled



Solar Street LIGHT



R(SL)-01-20(8W,12W,20W)



R(SL)-02-15(15W,20W,25W)



F(SL)-01-10(10W,20W,30W)

Model	Solar panel	Battery	Light source	POWER	Lumens	CT	Charging time	Working hours	Material	Waterproof level	Induction distance	Function
R(SL)01-20	12V 24W Polysilicon	7.4V12000mah Lithium battery	LED 24PCS	20W	High-grade 1800LM Low-grade 80-100LM	3000K-6500K	8-10H	16-20H	ADC12+PC	IP65	6-8M	can choose light&time control
R(SL)02-15	18V 15W Polysilicon	12V18000mah Lithium battery	2835 LED 64PCS	10W	High-grade800LM Low-grade 100-100LM	3000K-6500K	8-12h	12-16H	ADC12+PC	IP65	6-8M	Light& Time controlled

Model	Solar panel	Battery	Light source	POWER	Lumens	CT	Charging time	Working hours	Material	Waterproof level	Induction distance	Function
F(SL)01-10	6V 10W Polysilicon	3.7V15000mah Lithium battery	2835 LED 64PCS	10W	High-grade 600LM Low-grade 60-80LM	3000K-6500K	6-8h	10-12H	ADC12+PC	IP65	6-8M	Light& Time controlled

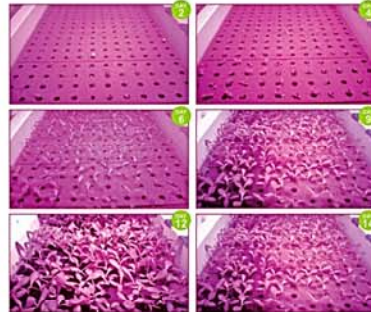
HORICULTURAL LIGHT



Item Model	ETB12B02-22B	Power	22W
Called way	at one end/double end	PCB Material	aluminum substrate
Input Voltage	AC85-265V	Working temperature	20 - 50 °C
Dimension	1100mm*620mm	Change lifespan	□50000Hours
Waterproof rate	Ip44	Net weight	390g
Material	aluminium alloy+PC	Gross Weight	540g
Source	96 pcs SMD	Suspended Height	15-20CM
light ratio	R/B=2/1 4/1 8/1	PPFD	50-75µmol/m ² /s

ICBRIGHT LED Horticultural Lights can help growers :

- 👍 Save electricity bill.
- 👍 Increase yield by 20%.
- 👍 Cut down plant growth cycle by 25%.



We are not only your supplier
But also your partner
We consider for you

